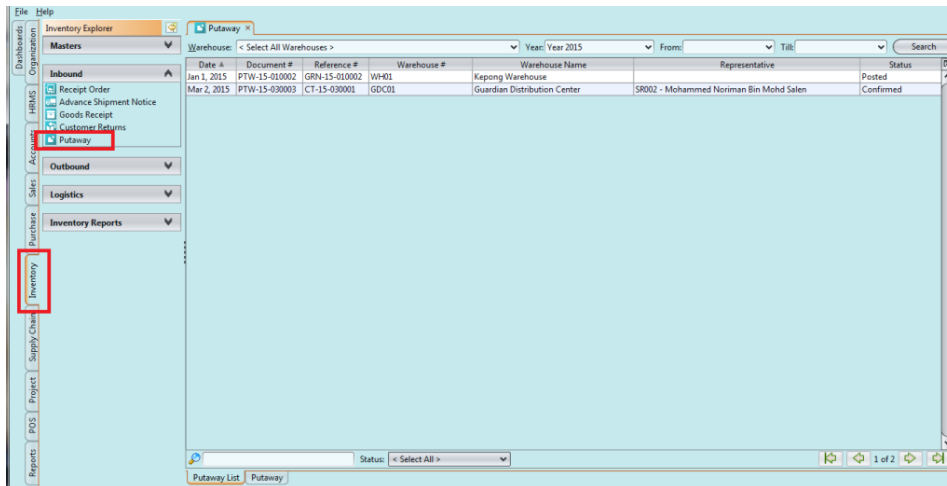


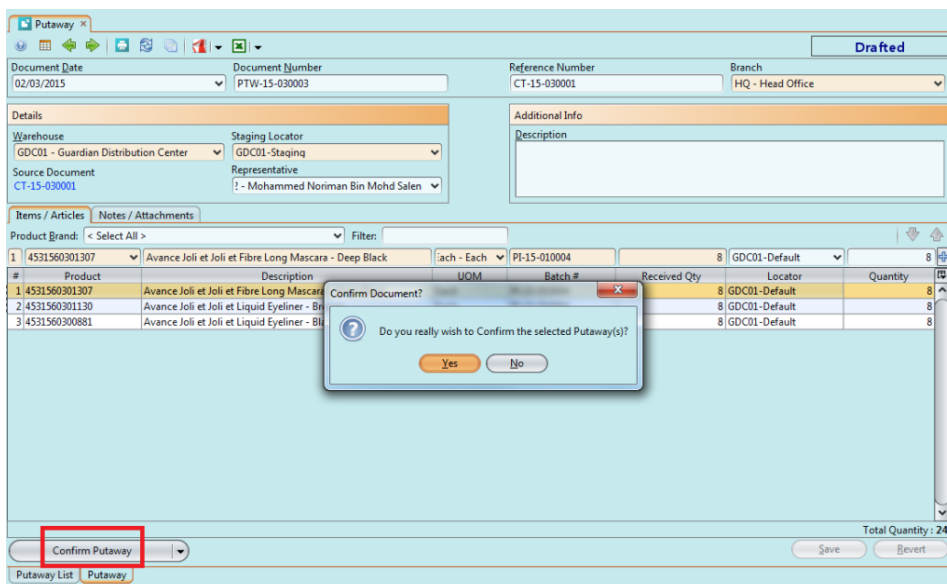
Putaway Goods

The putaway process includes putting goods away in storage bins in the warehouse or a holding area before placing the goods in the racks/bins. The following procedural steps is applied:-

1. Click on Inventory tab / Inbound / Putaway
2. Select a receipt from the list of receipts



3. Click **"Confirm Putaway"** then click **"Yes"** button to putaway the shipment



4. Click **"Post To Inventory"** then click **"Yes"** button when done

Putaway

Document Date: 02/03/2015 | Document Number: PTW-15-030003 | Reference Number: CT-15-030001 | Branch: HQ - Head Office

Confirmed

Warehouse: GDC01 - Guardian Distribution Center | Staging Locator: GDC01-Staging

Source Document: CT-15-030001 | Representative: ? - Mohammed Noriman Bin Mohd Salen

Additional Info: Description

Items / Articles

#	Product	Description	UOM	Batch #	Received Qty	Locator	Quantity
1	4531560301307	Avance Joli et Joli et Fibre Long Mascara - Deep Black	Each	PI-15-010004	8	GDC01-Default	8
2	4531560301130	Avance Joli et Joli et Liquid Eyeliner - B	Each	PI-15-010004	8	GDC01-Default	8
3	4531560300881	Avance Joli et Joli et Liquid Eyeliner - B	Each	PI-15-010004	8	GDC01-Default	8

Post Document?

Do you really wish to Post the selected Putaway(s)?

Yes No

Total Quantity: 24

Post To Inventory

Putaway List Putaway

Save Revert