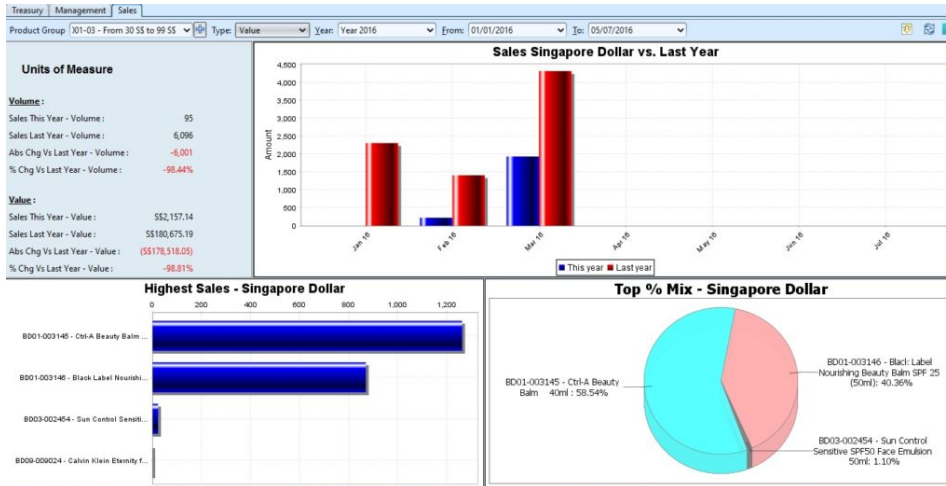



Sales Dashboard

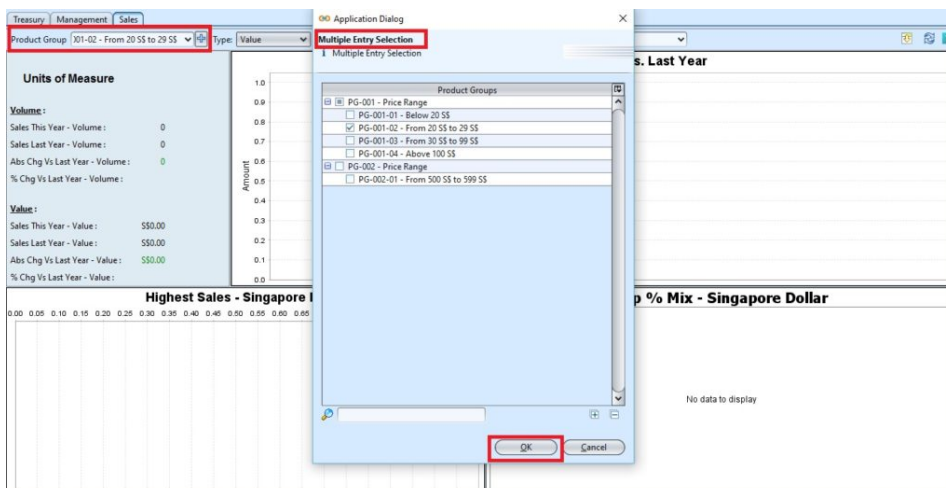
Sales dashboard give the user analysis of: **Sales This Year vs Last Year, Highest Sales and Top % Mix.** Below actions are available under **“Sales Dashboard”**:

 View sales dashboard for Sales module

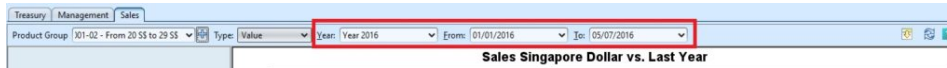



View Sales Dashboard for Sales Module

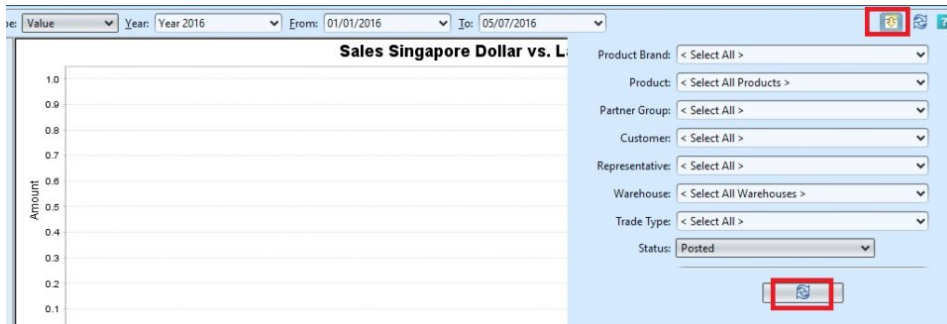
1. Select a **“Product Group”** from the drop-down list on top left of screen. Click  button next to **“Product Group”** drop-down list to select multiple groups. On the pop-up window, tick the box(es) of groups to be included in the report, then click **“OK”** button




2. Select period of sales data to show by selecting fiscal year and dates in “**Year**”, “**From**” and “**To**” drop-down lists on top of the screen

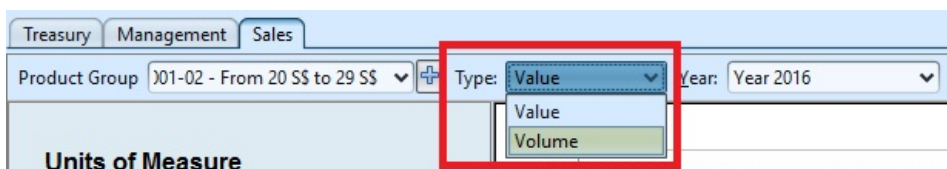


3. Click on  button at the top right of the screen and select the parameters to filter the report, i.e. by specific “**Product Brand**”, “**Customer**”



4. Click on  button at the top right of the screen to refresh the dashboard

5. Select to view sales graphs data by volume or value from “**Type**” drop-down list at the top of the screen



6. Right click on a graph view, it will pop up the following options:

- Properties: user can change graph’s title and appearance
- Copy: copy the graph as image
- Save As: save the graph as image file (PNG format)
- Print
- Zoom In
- Zoom Out
- Auto Range

Top % Mix - Singapore Dollar

